

**NEW**  
Standard Line  
Counter  
Exclusively  
at Ram!



### Double Counter

48"L x 20"D x 42"H. Has a 6" register drop with (2) grommet holes for wire management, (1) adjustable shelf and a "curved" feel with the sides and front ledge having a slight radius cut.  
**Model No. WM-420**  
Starting at \$459

### OPTIONAL ADD ONS:

- ADD LIGHTS TO SHOWCASE •
- ADD LOCK TO SHOWCASE •
- ADD MIRROR DOORS TO SHOWCASE •
- ADD DRAWER TO COUNTER •
- ADD LOCKING DRAWER TO COUNTER •
- WHITE INTERIORS ON BLACK CASES •
- SOLID BACK ON CASES •
- INVERT SHOWCASE SLIDING DOORS TO FRONT •

OPTIONAL ADD ONS ARE DONE AS THE FIXTURES ARE BUILT TO KEEP WITH QUALITY STANDARDS.  
LOCKS ARE PERMANENT, FACTORY-INSTALLED FOR UTMOST SECURITY

**RAM FIXTURE'S STANDARD LINE** OF FIXTURES IS COMPOSED OF SHOWCASES, COUNTERS, SLATWALL FIXTURES & DUMP TABLES. RAM HAS BEEN MANUFACTURING ITS OWN FIXTURES FOR OVER 32 YEARS AND HAS PROVED TO THE FIXTURE MARKET THAT CHOOSING OUR STANDARD LINE OVER IMPORTED KNOCK-DOWN VERSIONS **KEEPS CUSTOMERS MORE SATISFIED.**

**Why?** THE MANUFACTURING GIVES OUR FIXTURES A SUPERB QUALITY & LONGEVITY THAT WILL STAND UP TO EVERYDAY RETAIL TRAFFIC & EXCEED EXPECTATIONS.

WE USE HIGH QUALITY ALUMINUM EXTRUSIONS TO CONNECT GLASS TO MELAMINE THROUGHOUT. GLASS WILL NEVER DIRECTLY TOUCH MELAMINE. WE USE THE HIGHEST GRADE 3/4" MELAMINE IN THE MOST TRENDY FINISHES. OUR SLIDING DOORS USE AN ACTUAL ALUMINUM TRACK FOR OUR QUALITY WHEELS TO SLIDE ON. OUR CASES ARE BUILT WITH THE HIGHEST QUALITY OF GLUE AND FASTNERS TO HOLD UP TO THE TOUGHEST RETAIL TRAFFIC. **GUARANTEED!**

### Why choose Ram's Standard Line vs other Economy Fixtures in the market?

- NOT KNOCK-DOWNS •
  - FULLY ASSEMBLED •
  - MANUFACTURED IN TEXAS - NOT IMPORTS •
  - LONGER LIFE TIME THAN OTHER ECONOMY LINES •
  - NO FURNITURE ASSEMBLY EXPERIENCE NEEDED •
  - NO WASTED SELLING TIME PUTTING TOGETHER •
  - NO SPECIAL TOOLS NEEDED •
  - NO ADDITIONAL FEES TO HAVE SOMEONE ASSEMBLE •
- GUARANTEED SUPERIOR QUALITY!**



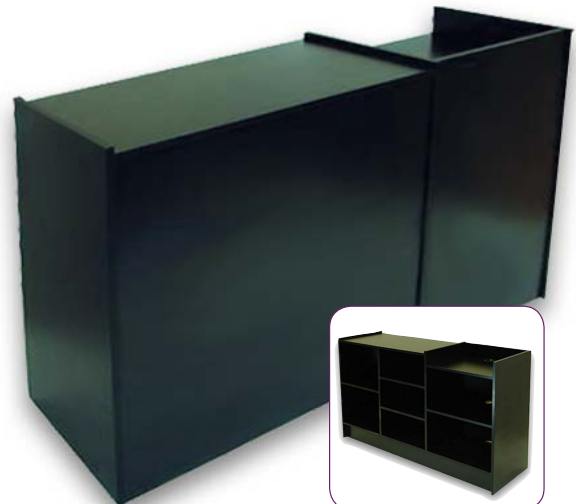
### Register Stand

22"L x 18"D x 38"H. Back open shelving. Also available as showcase register stand  
**Model No. ERC2 (ERC2-G with bottom case)**  
Starting at \$150



### Corner Filler

24"L x 38"H. 90 degree. Available completely solid or with (2) glass shelves for display use.  
**Model No. CFS (CFG with glass shelves)**  
Starting at \$160



### Counter with Register Stand

38"H x 18"D x (Length). Back open shelving. Available in 4', 5' & 6' Lengths.  
**Model No. ECRD-(length)**  
Starting at \$390

too "standard"? we custom manufacture to fit your needs.



**NOT knock-downs!**  
 • FULLY ASSEMBLED •  
 • MANUFACTURED IN TEXAS • NOT IMPORTED •  
 You DO NOT need furniture assembly experience!  
 You DO NOT need hours of your time to build!  
 You DO NOT need special tools!  
 READY TO GO & WILL LAST FOR YEARS!  
**GUARANTEED SUPERIOR QUALITY!**

**Full Vision Showcase**

38"H x 18"D x (Length).  
 Comes with (1)- 10"D plate glass shelf.  
**Model No. FV(size) Starting at \$297**

**Half Vision Showcase**

38"H x 18"D x (Length).  
 Comes with (1)- 10"D plate glass shelf and  
 back open storage area. Glass area is 18"H.  
**Model No. HV(size) Starting at \$297**

**Jewelry Vision Showcase**

38"H x 18"D x (Length).  
 Open back storage area. Glass area is 12"H.  
**Model No. JV(size) Starting at \$297**

All cases are available in 4', 5' & 6' Lengths.



Standard Line Fixtures are available in 5 melamine finishes:  
 White, Black, Light Maple, Cherry & Espresso

*\*black cases have option of white interiors*

**Register Counter with Side Showcase**

38"H x 18"D x 48"L. Back open shelving, showcase has  
 (1) adjustable shelf.

**Model No. ECRD(size)-G  
 Starting at \$435**



**Register Showcase with Side Counter**

38"H x 18"D x 48"L. Back open shelving, showcase has  
 (1) adjustable shelf.

**Model No. ECRD-GB(Length)  
 Starting at \$435**



*\*cases can be made  
 with solid backs*



**Wall Showcase**

75"H x 14-1/2"D x 30"W. Comes with (4)- 14"D plate  
 glass shelves adjustable on side perforated system.  
**Model No. WS starting at \$630**

**Wide Wall Showcase**

75"H x 18"D x 48"W. Comes with (3)- 14"D plate glass  
 shelves adjustable on back standards.  
**Model No. WS4 starting at \$730**

too "standard"? we custom manufacture to fit your needs.



Standard Line Fixtures are available in 5 melamine finishes:  
 White, Black\*, Light Maple, Cherry & Espresso  
 \*black cases have option of white interiors



**NEW**  
 Standard Line  
 Counter  
 Exclusively  
 at Ram!

### \*NEW\* P.O.P. Counter

48"L x 20"D x 42"H.

Finish	Model No.	Price
White	W-M420W	\$459
Black	W-M420B	\$490
Light Maple	W-M420MP	\$490
Cherry	W-M420CH	\$490
Espresso	W-M420ESP	\$490

### Full / Half / Jewelry Vision Showcases

Finish	48"L x 18"D x 38"H.			60"L x 18"D x 38"H.		70"L x 18"D x 38"H.	
	Model No.	Price	Model No.	Price	Model No.	Price	
White	FV4-WTE	\$297	FV5-WTE	\$329	FV6-WTE	\$379	
Black	FV4-BLK	\$322	FV5-BLK	\$357	FV6-BLK	\$383	
Light Maple	FV4-MAP	\$352	FV5-MAP	\$377	FV6-MAP	\$414	
Cherry	FV4-CHR	\$397	FV5-CHR	\$422	FV6-CHR	\$459	
Espresso	FV4-ESP	\$397	FV5-ESP	\$422	FV6-ESP	\$459	



### Register Counter / Showcase Combos / Corner Fillers

Finish	48"L x 18"D x 38"H.			2' Glass Front Counter		Corner Fillers	
	Model No.	Price	Model No.	Price	Model No.	Price	
White	Counter with side case	ECRD-4-G-WTE	\$435	ERC2-G-WHT	\$195	CFS-WTE	\$160
	Case stand with side counter	ECRD-GB-4WTE		-	CFG-WTE		
Black	Counter with side case	ECRD-4-G-BLK	\$470	ERC2-G-BLK	\$230	CFS-BLK	\$195
	Case stand with side counter	ECRD-GB-4BLK		-	CFG-BLK		
Light Maple	Counter with side case	ECRD-4-G-MAP	\$490	ERC2-G-MAP	\$250	CFS-MAP	\$215
	Case stand with side counter	ECRD-GB-4MAP		-	CFG-MAP		
Cherry	Counter with side case	ECRD-4-G-CHR	\$535	ERC2-G-CHR	\$295	CFS-CHR	\$235
	Case stand with side counter	ECRD-GB-4CHR		-	CFG-CHR		
Espresso	Counter with side case	ECRD-4-G-ESP	\$535	ERC2-G-ESP	\$295	CFS-ESP	\$235
	Case stand with side counter	ECRD-GB-4ESP		-	CFG-ESP		



### Standard Counters with or without Register Drop



\*Wall cases can have glass or solid backs

Finish		48"L x 18"D x 38"H.		60"L x 18"D x 38"H.		70"L x 18"D x 38"H.		2' Register Stand	
		Model No.	Price	Model No.	Price	Model No.	Price	Model No.	Price
White	No Drop	EC4-WHT	\$380	EC5-WHT	\$415	EC6-WHT	\$470	ERC2-WHT	\$150
	With Register Drop	ECRD-WTE	\$390	ECRD5-WHT	\$420	ECRD6-WHT	\$480	-	-
Black	No Drop	EC4-BLK	\$415	EC5-BLK	\$450	EC6-BLK	\$505	ERC2-BLK	\$185
	With Register Drop	ECRD-BLK	\$425	ECRD5-BLK	\$455	ECRD6-BLK	\$515	-	-
Light Maple	No Drop	EC4-MAP	\$435	EC5-MAP	\$470	EC6-MAP	\$525	ERC2-MAP	\$205
	With Register Drop	ECRD-MAP	\$445	ECRD5-MAP	\$475	ECRD6-MAP	\$535	-	-
Cherry	No Drop	-	N/A	-	N/A	-	N/A	ERC2-CHR	\$250
	With Register Drop	ECRD-CHR	\$490	ECRD5-CHR	\$520	ECRD6-CHR	\$580	-	-
Espresso	No Drop	-	N/A	-	N/A	-	N/A	ERC2-ESP	\$250
	With Register Drop	ECRD-ESP	\$490	ECRD5-ESP	\$520	ECRD6-ESP	\$580	-	-

### Wall Cases

Finish	30"W x 14"D x 75"H.		48"W x 18"D x 72"H.	
	Model No.	Price	Model No.	Price
White	WS-WHT	\$630	WS4-WTE	\$730
Black	WS-BLK	\$665	WS4-BLK	\$765
Light Maple	WS-MAP	\$685	WS4-MAP	\$785
Cherry	WS-CHR	\$685	WS4-CHR	\$785
Espresso	WS-ESP	\$685	WS4-ESP	\$785

### OPTIONAL ADD ONS / MODIFICATIONS:

- ADD LIGHTS TO SHOWCASE +\$175.00 •
- ADD LOCK TO SHOWCASE +\$35.00 •
- ADD MIRROR DOORS TO SHOWCASE +\$55.00 •
- ADD DRAWER TO 2' COUNTER +\$45.00 •
- ADD LOCKING DRAWER TO 2' COUNTER +\$75.00 •
- PUT WHITE INTERIORS IN BLACK CASES NO CHARGE •
- ADD SOLID BACKS TO SHOWCASES NO CHARGE •
- INVERT SHOWCASE SLIDING DOORS TO FRONT NO CHARGE •

OPTIONAL ADD ONS ARE DONE AS THE FIXTURES ARE BUILT TO KEEP WITH QUALITY STANDARDS. LOCKS ARE PERMANENT, FACTORY-INSTALLED FOR UTMOST SECURITY.

too "standard"? we custom manufacture to fit your needs.